

DIAGNOSTIC EVALUATION

Year 4 of Primary Education

SCHOOL YEAR 2024-2025

Name / Surname(s):

School:

Group:

City / Town:

Date:

ENGLISH

LITERACY

Instructions

This test consists of three parts: Listening, Reading and Writing.

Listening

We will begin with a listening test. You will hear someone speaking about a situation.

- First, read the questions (2 minutes).
- Listen carefully to the recording. You will hear the recording three times.
- After each part, you will have time to answer the questions.

For each question, you have to circle the right answer. *For example:*

Example 1. How many months are there in a year?

- A. 2 months.
- B. 17 months.
- ☒ C. 12 months.
- D. 10 months.

If you decide to change your answer, cross out (X) your first option and circle your new answer. *For example:*

Example 1. How many months are there in a year?

- ☒ A. 2 months.
- B. 17 months.
- ☒ C. 12 months.
- D. 10 months.

Reading

You will read two texts and answer several questions.

Writing

Lastly, you will write a short composition, following some instructions.



The whole test lasts 60 minutes.

Listening

You are going to listen to a *Whatsapp* conversation between Julie and Lola, two friends. Listen carefully and answer the questions.



1. Mike...

- A. ...wants to celebrate a party.
- B. ...is coming back from a year in another country.
- C. ...is a Julie's and Lola's new friend.
- D. ...is going to Australia for a year.

2. Julie is thinking of celebrating a...

- A. ...birthday party for their friend Mike.
- B. ...cocktail party for their friend John.
- C. ...welcome home party for their friend Mike.
- D.party for some friends.

3. Mike's best friend, John ...

- A. ...is happy to go on holidays to celebrate the party.
- B. ...is happy for the party to be at his holiday home.
- C. ...is happy for the party to be by the sea.
- D. ...is not happy about sharing his house with lots of people.

4. During the conversation:

- A. Lola is at work.
- B. Lola and Julie are in the same room.
- C. Julie is at work.
- D. Julie is with John.

5. Mike knows they are organizing a party:

- A. True.
- B. False.

6. Lola is going to...

- A. ... buy some balloons.
- B. ... buy some masks.
- C. ... buy some kind of surprise.
- D. ... buy some little candles.

7. Lola suggests that the people at the party:

- A. Wear funny masks to surprise Mike.
- B. Wear masks with a picture of Mike's face on them.
- C. Bring some balloons for decoration.
- D. Bring some candles for decoration.

8. John's holiday house...

- A. ...has a big garden and is opposite a post office.
- B. ...is up in the mountains, in Whitby.
- C. ...is full of trees and next to the post office.
- D. ...has a big garden but it is far from the sea.

9. Lola offers to help Julie to:

- A. Organise all the invitations.
- B. Make a cake for Mike.
- C. Decide where to have the party.
- D. Do all the shopping for the party.

10. The idea is for the party to be:

- A. Absolutely wild.
- B. A children's party.
- C. A nice surprise.
- D. Only for the family.

Reading 1 - HERO DOG



Chanell Bell is a 10 years old girl who has an intelligent dog named Kobe. On the 21 of December he saved the people in an area of Philadelphia from a disaster. Kobe discovered a dangerous gas escape underground using his incredible sense of smell.

Chanell saw Kobe digging persistently in the garden. Kobe often digs in the garden, but that day was different. Kobe was acting in a **strange way** and that caught Chanell's attention. She believed in Kobe's instincts and she remembered a similar incident in November.

Chanell was very worried about this situation, so she used a gas detection tool in the place where Kobe was digging. The tool immediately showed there was a lot of toxic gas present. Chanell knows that some gases are flammable; this means that they burn easily and violently if they come into contact with fire. Chanell immediately called 911, the emergency services number. Later, a firefighter told her that it was lucky that Kobe detected the escape. Finally, the gas workers fixed the problem and stopped an explosion. Nothing happened and everybody was safe!

Chanell is tremendously impressed and grateful for Kobe's help. She insists on how important it is to pay attention to pets' reactions.

Based on the article "*Dog That Won't Stop Digging Saves Entire Neighborhood After They Find Dangerous Gas Leak Underground*" (www.goodnewsnetwork.org).



11. What is the name of Kobe's owner?

.....

12. When did Kobe discover the gas escape?

- A. On Christmas Day.
- B. Just before Christmas.
- C. On New Year's Eve.
- D. Around Halloween.

13. How did Kobe discover the gas escape?

- A. By seeing it.
- B. By hearing it.
- C. By smelling it.
- D. By tasting it.

14. What did Chanell notice that Kobe was doing in the garden?

- A. Smelling something.
- B. Playing with the sand.
- C. Digging persistently.
- D. Barking loudly.

15. “Kobe was acting in a strange way” means that...

- A. Kobe was acting normally.
- B. Kobe was acting in a dangerous way.
- C. Kobe was not feeling well at all.
- D. Kobe was not acting normally.

16. What did Chanell use to detect the gas?

.....

17. What did Chanell do after detecting that there was a problem?

- A. She did nothing, because kobe digs often in the garden.
- B. She called the emergency services.
- C. She went back inside to think about it.
- D. She fixed the problem and stopped an explosion.

18. A firefighter told Chanell that she was lucky because...

- A. ... it was not a very toxic gas.
- B. ... Kobe stopped an explosion.
- C. ... the gas escape was fixed by the gas detector.
- D. ... Kobe was wrong and there was no gas escape.

19. Which adjective in the text means “out of danger”?

- A. Safe.
- B. Flammable.
- C. Strange.
- D. Grateful.

20. What is the main idea in the text?

- A. Dogs act in strange ways sometimes.
- B. People should use gas detection tools more often.
- C. People should pay attention to their pets' reactions.
- D. You should always call 911 when there is a problem.

21. Choose another title for this story.

- A. “A clever dog saves Christmas”.
- B. “A terrible sense of smell”.
- C. “The danger of gas escapes”.
- D. “Disaster before Christmas”.

Continue on next page

Reading 2 – CAMPS

8 – 12 year-olds

ANIMAL CAMP

Do you love adventure and are you crazy about animals? Then this animal camp is perfect for you! You will spend the week doing fun and interesting activities centered on the care of animals. The best of the week will be a visit to the Wildlife Conservation Park in the city of Birmingham and a trip to a real farm!

Some of our top activities are:

- Milking cows
- Feeding the big cats at Wildlife Conservation Park
- Collecting eggs at an ostrich farm
- Learning about bonfires
- Swimming in a near lake

Included

- Summer Camp T-shirt
- All meals and snacks
- All equipment
- Transport by bus
- A fun team of camp monitors

390€/week

MORE INFO

(04) 298 3985 2092
+76 209 1092 4095
info@animalsummercamp.com



ART CAMP

AGES: 5-6 | 7-8 | 9-11 | 12-14

- WEEKLY ARTISTIC EXPERIENCES
- LOTS OF DIFFERENT WORKSHOPS (PAINTING, DRAWING, SCULPTURE, COMICS, AND MORE)
- YOU CAN CHOOSE A DIFFERENT TOPIC EVERY WEEK
- YOU CAN REGISTER FOR A SPECIFIC WEEK OR FOR THE WHOLE SUMMER
- TICKETS TO VISIT LOCAL MUSEUMS INCLUDED
- EVERY FRIDAY YOU CAN EXHIBIT YOUR ARTWORK. INVITE YOUR FAMILY AND FRIENDS!!

Cost: 420€ per week

DATES

- JUNE 24 - 28
- JULY 8 - 12
- JULY 15 - 19
- AUGUST 5 - 9

(MONDAY TO FRIDAY)

22. In the Animal Camp you can enjoy a trip to the Wildlife Conservation Park: where is this Park?

.....

23. A family wants their child to attend the Animal camp during the summer. What can they do to find out information about dates?

- A. They can only write an email because the camp has no telephone.
- B. They can choose from three different telephone numbers for contact.
- C. They can contact the camp in two different ways: email or phone.
- D. It is not possible to find out about dates for the Animal Camp.

24. What happens at the Art Camp on Fridays?

- A. Children can visit a museum.
- B. Children can show their artwork.
- C. Children can draw special pictures.
- D. Children can choose a different theme.

25. If children want to go to the Art Camp in August, from what day to what day will they go?

From theth to theth.

26. Write T (true) or F (false):

	T	F
A. In the Art Camp they work on the same topic every week.		
B. You work with cows at the Animal Camp.		
C. In the Animal Camp you will enjoy only animal-related activities.		
D. In the Animal Camp you have to pay for the equipment.		

27. Mark with an X if each sentence talks about the Animal Camp, the Art camp or both:

	Animal camp	Art camp	The two of them
A. This camp costs less than 400 €.			
B. This camp is for 13 years old children.			
C. You go on a trip.			
D. You can invite your family.			

Continue on next page

Writing

28. Describe the kind of things you do on a typical day in your school holidays.

HERE ARE SOME IDEAS TO HELP YOU:

- Morning routines.
- Activities during the day.
- People you do the activities or spend your time with.
- Evening activities and routines.
- Favourite activities or moments.

You have to use this planning space:

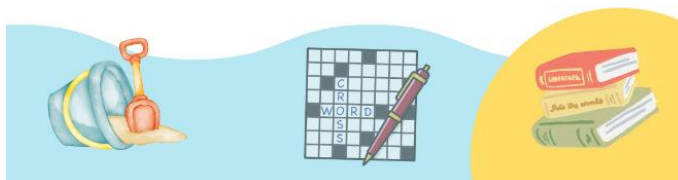
First paragraph	
Second paragraph	
Third paragraph	

Now write your COMPLETE text here:

Remember:

Connectors: *and, or, but, because, so, so that...*
Time expressions: *First, after that, later, at (time), then, next, when I, in the morning, in the afternoon, in the evening...*

A DAY DURING MY SCHOOL HOLIDAYS

This image shows a full page of white paper with horizontal ruling lines. The lines are evenly spaced and extend across the width of the page. There are no margins, text, or other markings on the paper.

<i>This part is for the teacher only</i>		Mark 0, 0.25, 0.5, 1
Planning		
General presentation		
Spelling		
Grammatical accuracy		
Lexical range		
Adequacy		
Coherence		
Cohesion	Sentence structures	
	Punctuation, paragraphs	
	Cohesive devices	
Item 28 – Total:		/10